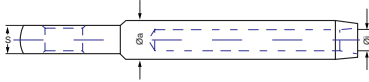
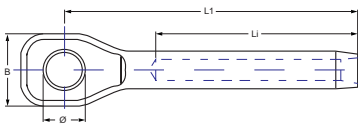
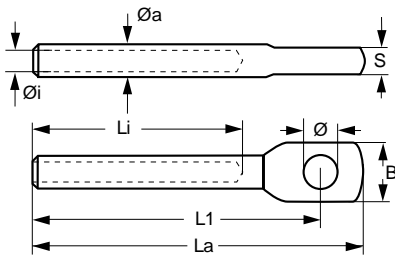


WALZTERMINALS - EDELSTAHL 1.4401
SWAGE TERMINALS - AISI 316

AUGTERMINALS - EYE TERMINALS



Art.-No.	Øi mm	Øa mm	Ø mm	L1 mm	Li mm	S mm	B mm	Draht- seil mm	BRL kg
OS 240002	2,2	5,5	5,0	50,0	30,0	5,0	12,2	2	330
OS 240025	2,8	6,35	6,4	57,0	32,0	4,0	15,0	2,5	520
OS 240003	3,5	6,35	6,4	55,5	38,5	5,0	15,0	3	1.200
OS 240004	4,4	7,5	8,1	64,0	45,0	6,0	18,0	4	1.550
OS 240005	5,3	9,0	9,6	72,0	51,5	7,5	19,5	5	2.350
OS 240006	6,4	12,5	12,8	86,0	61,0	10,0	24,5	6	5.100
OS 240007	7,5	14,2	12,8	100,0	70,5	10,0	27,0	7	6.500
OS 240008	8,4	16,1	16,2	112,5	77,0	13,0	30,5	8	8.550
OS 245810	10,5	17,8	16,2	134,0	95,0	14,0	33,5	10	9.400
OS 243412	12,6	20,0	19,2	156,5	112,0	18,0	40,0	12	11.000



Art.-No.	Øi mm	Øa mm	Ø mm	La mm	L1 mm	Li mm	S mm	B mm	Draht- seil mm
PG 7603	3,2	6,3	6,4	60	55	39	6,0	14,2	3
PG 7604	4,2	7,5	8,1	72	66	45	7,0	17,0	4
PG 7605	5,2	9,1	10,0	84	77	52	8,0	20,5	5
PG 7606	6,4	12,5	11,2	102	91	64	9,5	24,2	6
PG 7607	7,5	14,3	12,8	113	102	70	11,0	28,0	7
PG 7608	8,5	16,0	14,5	128	112	80	12,0	31,5	8
PG 7610	10,5	18,0	16,1	155	136	100	15,0	33,2	10
PG 7612	12,4	21,4	19,1	197	195	132	18,0	42,4	12
PG 7614	14,4	25,0	22,5	232	226	156	22,0	48,2	14
PG 7616	16,4	28,2	25,6	262	245	176	23,0	55,0	16
PG 6608	8,5	16,0	12,7	128	114	80	14,0	32,0	8
PG 6610	10,5	18,0	16,0	155		100	15,0		10
PG 6612	12,4	21,4	19,0	197		132	18,0		12
PG 6614	14,4	25,0	22,2	232	208	156	22,0	44,0	14
PG 6616	16,4	28,2	25,4	262	235	176	24,0	51,0	16
PG 6619	20,0	34,5	28,0	302	270	210	28,0	55,0	19
PG 6622	23,0	40,3	32,0	347		242	32,0		22
PG 6626	28,0	45,9	35,0	408		290	34,0		26

"Starboot" - Augterminals AISI 303 - Eye terminals AISI 303



Art.-No.	(MS Part No.)	Øi mm	Øa mm	Ø3 mm	L1 mm	Li mm	Bi mm	Drahtseil-Ø	
								inch	nom.mm
LK 6822	MS20668-2	1,9	4	5	41,5	30	2	1/16"	1,6
LK 6832	MS20668-3	2,7	5,5	5	52	35	2,5	3/32"	2,5
LK 6843	MS20668-4	3,6	6,3	5	59	41	5	1/8"	3,2
LK 6854	MS20668-5	4,5	7,5	6,5	69	45	5	5/32"	4
LK 6865	MS20668-6	5,1	9	8	76,5	55	6,5	3/16"	4,8



When working with swaging terminals the manufacturer and the working person have to make sure, that the diameters of wire rope, the diameters inside and outside of terminals and the size of used roller pair, are matching. Follow instructions of swaging machines manufacturer exactly and check "Table of swage dimensions".
 All technical data without obligation, errors reserved